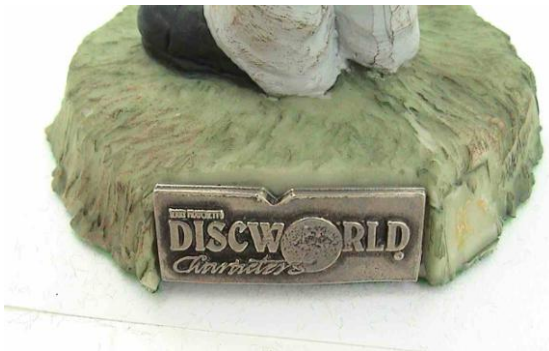


*Pewter Hallmarks*



To avoid real Clarecraft pieces being copied or cloned, we introduced pewter trademarks to all our production from August 2001. As further evidence of the genuine article, we made a notch in the pewter on the left hand side, and moved the notch along over the next letter every year. That way, you should be able to work out which year your figurine was made – rather like hallmarks in silver. The first picture shows a second year notch, and the lower picture shows the notch for 2005 in the year that we closed.



A few items that had not been painted by Clarecraft painters were appearing at Car Boot sales and being passed off as genuine.

To counter this, we produced a pewter hallmark that we could fix fixed to your Paint Your Own figures.

It was not essential but, as well as security, it was an extra reminder of when and where you made it.

